

SPARE PARTS SECTION

English Wheel Model. EWHD-80

Order Code S2254

Edition No : EWHD-80-1

Date of Issue : 09/2021

The following section covers the spare parts diagrams and lists that were current at the time this manual was originally printed. Due to continuous improvements of the machine, changes may be made at any time without notification.

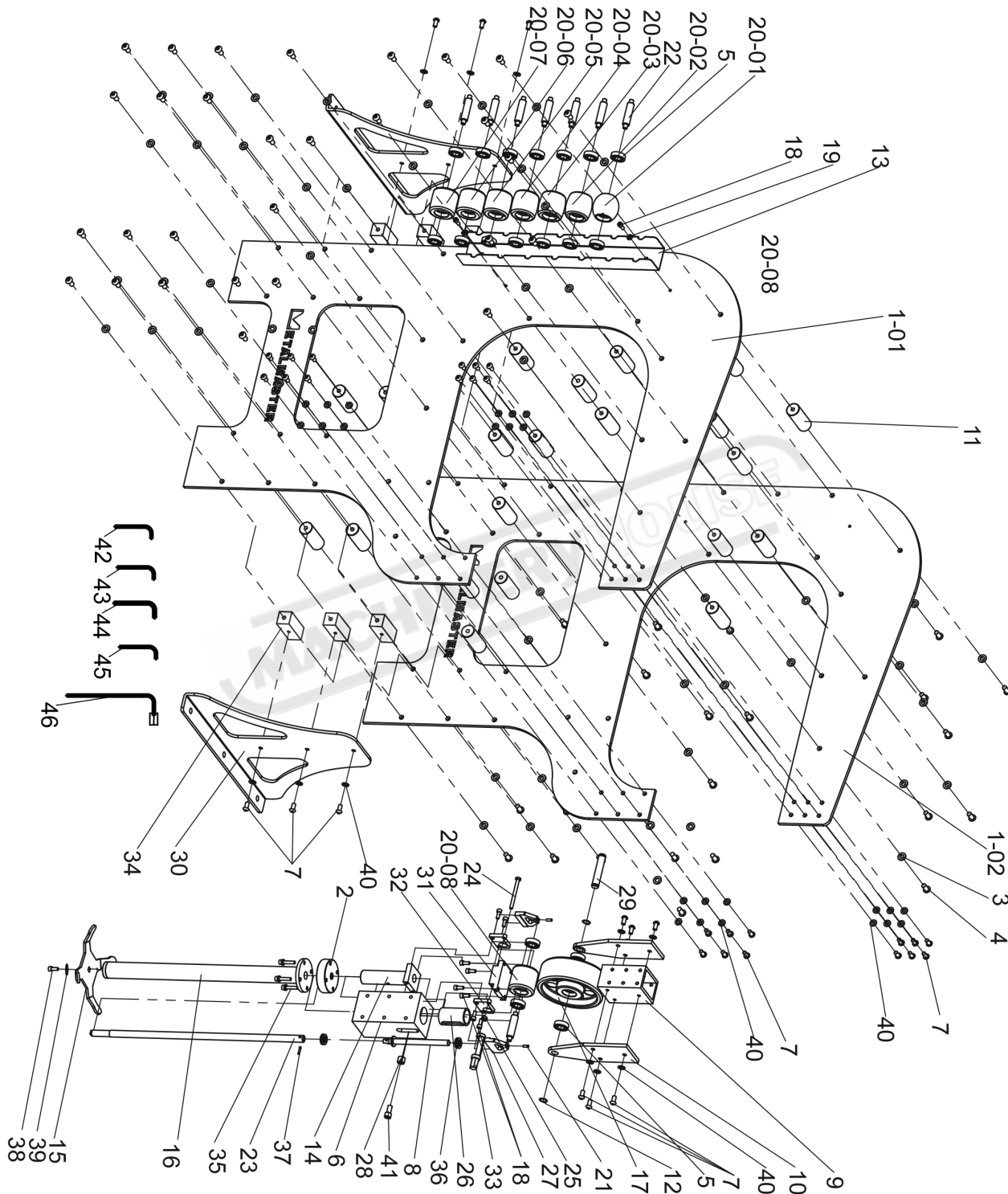
HOW TO ORDER SPARE PARTS

1. Have your machines **model number, serial number & date of manufacture** on hand, these can be found on the specification plate mounted on the machine
2. A scanned copy of your parts list/diagram with required spare part/s identified.

NOTE: SOME PARTS MAY ONLY BE AVAILABLE AS AN ASSEMBLY

3. Go to www.machineryhouse.com.au/contactus and fill out the inquiry form attaching a copy of scanned parts list.

SPARE PARTS DIAGRAM



SPARE PARTS LIST

ITEM	DESCRIPTION	QTY.	ITEM	DESCRIPTION	QTY.
1-01	LEFT SIDE PLATE	1	20-08	FLAT LOWER WHEEL	1
1-02	RIGHT SIDE PLATE	1	21	SCREW M6X20	2
2	ROUND PLATE	1	22	LOWER WHEEL SHAFT	8
3	WASHER 14MM	58	23	ADJUSTMENT SHAFT	1
4	BOLT M14X25	58	24	BOLT	1
5	BEARING 6004-2Z	18	25	LOCKING NUT M6	1
6	LOWER SLIDE BLOCK	1	26	COPPER BUSHING	1
7	SCREW M10X20	36	27	LOWER WHEEL PLATE	2
8	SCREW	1	28	BUSHING	1
9	MAIN TOP BLOCK	1	29	UPPER WHEEL SHAFT	1
10	UPPER WHEEL PLATE	2	30	LEG	2
11	PLATE SPACER	22	31	LOWER WHEEL BLOCK	1
12	C-RING 20MM	2	32	PLATE	2
13	LOWER WHEEL RACK	1	33	ECCENTRIC ADJUSTER	1
14	GUIDE SHAFT	1	34	SQUARE PLATE SPACER	6
15	FOOT WHEEL	1	35	SCREW M8X50	4
16	ADJUSTING TUBE	1	36	BEARING 51103	2
17	UPPER WHEEL	1	37	PIN Ø6X20	1
18	SCREW M8X20	10	38	SCREW M6X10	1
19	WASHER 8MM	6	39	WASHER 6MM	1
20-01	2" LOWER WHEEL	1	40	WASHER 10MM	36
20-02	4" LOWER WHEEL	1	41	SCREW M10X20	1
20-03	6" LOWER WHEEL	1	42	HEX KEY WRENCH 3MM	1
20-04	8" LOWER WHEEL	1	43	HEX KEY WRENCH 5MM	1
20-05	12" LOWER WHEEL	1	44	HEX KEY WRENCH 6MM	1
20-06	24" LOWER WHEEL	1	45	HEX KEY WRENCH 8MM	1
20-07	36" LOWER WHEEL	1	46	L WRENCH 19MM	1

NOTE: SOME INDIVIDUAL PARTS MAY ONLY BE AVAILABLE AS AN ASSEMBLY