



---

## OPERATION MANUAL

---

# SPARE PARTS SECTION

The following section covers the spare parts diagrams and lists that were current at the time this manual was originally printed. Due to continuous improvements of the machine, changes may be made at any time without notification.

### HOW TO ORDER SPARE PARTS

1. Have your machines **model number, serial number & date of manufacture** on hand, these can be found on the specification plate mounted on the machine
2. A scanned copy of your parts list/diagram with required spare part/s identified
3. Go to [www.machineryhouse.com.au/contact us](http://www.machineryhouse.com.au/contact-us) and fill out the inquiry form attaching a copy of scanned parts list.

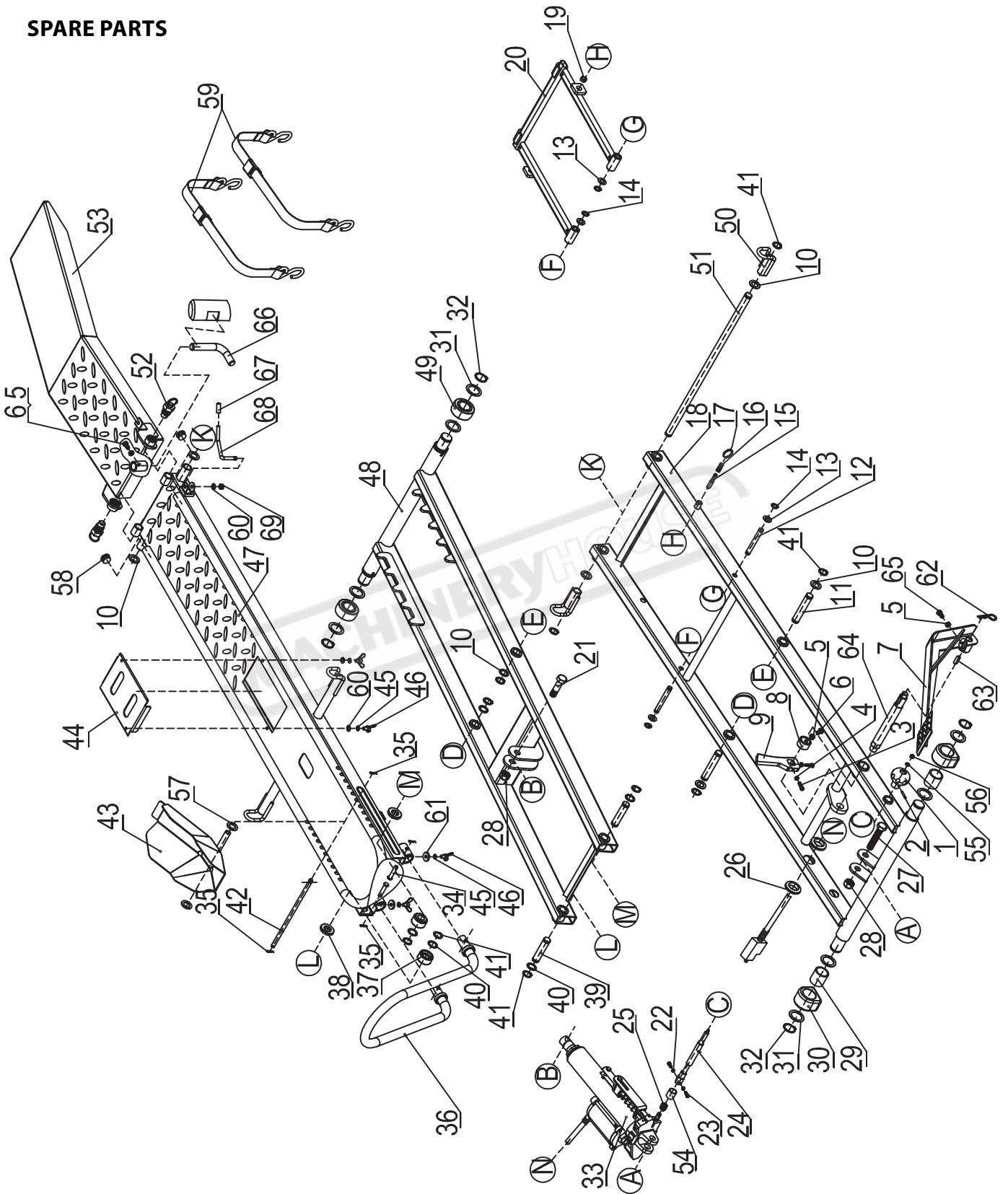
### CONTENTS

SpareParts.....	15
Spare Parts List.....	16
Risk Assessment.....	18



# OPERATION MANUAL

## SPARE PARTS





## OPERATION MANUAL

### SPARE PARTS LIST

REF#	DRAWING No.	DESCRIPTION	QTY
1	MS1000-11001	Hand wheel	1
2	9402-04025-FH	Elastic Pin	1
3	9105-06020-DX8.8	Hex Socket Round Head Screw M6x20	2
4	9201-06000-DX	Hex Nut M6	2
5	9201-08000-DX	Hex Nut MB	3
6	9101-08016 -DX8.8	Hex Bolt M8x16	2
7	MS1000-10000	Foot Pedal	1
8	MS1000-00012-DX	Pin Bushing	1
9	MS1000-00011-DY	Lift Lever	1
10	MS1000-00010	Washer	8
11	MS1000-00006-DX	Hitch Pin	2
12	MS1000-00007-DX	Hitch Pin	2
13	9301-12000-DX	Flat Washer Ø12	4
14	9304-12000-FH	Circlip for Shaft	4
15	Z330-00007-DX	Pawl	1
16	Z330-00003-FH	Spring B	1
17	Z330-00017-DX	Key Ring	1
18	MS1000-01000	Base Frame	1
19	MS1000-00015	Bracing Bushing	1
20	MS1000-06000	Safety Support Bar	1
21	9101-16060-DX8.8	Hex Bolt M16x60	1
22	9201-05000-DX	Hex Nut MS	2
23	9105-05012-DX8.8	Hex Socket Round Head Screw M5x12	2
24	MS1000-11100	Release Valve Lever	1
25	MS1000-05004-FH	Torsional Spring	1
26	MS1000-00017	Rubber Sheath	2
27	E130-00006-DX	Hex Bolt M16x80	1
28	9206-16000-DX	Nylon Lock Nut M16	2
29	MS1000-00014-DX	Bushing	2
30	MS1000-00009	Active Block	2
31	T932-00005-DX	Flat Washer	8
32	9304-32000-FH	Circlip for Shaft	4
33	MS1000-05000	Hydraulic Cylinder	1
34	MS1000-00013-DX	Hitch Pin	2
35	M080-00007-DX	Spring Pin	4



## OPERATION MANUAL

REF#	DRAWING No.	DESCRIPTION	QTY
36	MS1000-09000	Front Wheel Loop	1
37	MS1000-00002	Wheel	2
38	MS1000-00016	Bushing	2
39	MS1000-00005-DX	Hitch Pin	2
40	N280-00043	Adjustable Washer C	4
41	9304-19000-FH	Circlip for Shaft	10
42	MS1000-00001-DX	Hitch Pin	1
43	MS1000-08000	Front Wheel Chock	1
44	MS1000-00003	Rectangular Plate	1
45	9303-08000-DX	Spring Washer	4
46	919905-08012-DX	Wing Bolt M8x12	4
47	MS1000-03000	Platform	1
48	MS1000-02000	Back Lifting Arm	1
49	MS1000-00008	Nylon Wheel	2
50	MS1000-07000	Tie Down Hook	2
51	MS1000-00004-DX	Hitch Pin	1
52	N600-40000	Safety Pin	2
53	MS1000-04000	Sloping Panel	1
54	MS1000-05002	Pressure Spring Bushing	1
55	9301-06000-DX	Flat Washer Ø 6	1
56	9206-06000-DX	Nylon Lock Nut M6	1
57	LSA22-00021	Rubber Washer 2	2
58	T680-00003	End Cap	2
59	MS1000-00019	Safety Belt	2
60	9301-08000-DX	Flat Washer 08	2
61	T200-00001-DX	Gasket	2
62	LSP25-00012-DX	R Pin	1
63	MS1000-00020	Flat Key	1
64	MS1000-00021-DX	Lift Shaft	1
65	9101-08020-DX8.8	Hex Bolt M8x20	1
66	MS1000-00022-DX	Diagonal Bar	1
67	NW01-00006	Handle Grip	1
68	NW01-00005-CD	Handle B	1
69	9206-08000-DX	Nylon Lock Nut M8	1